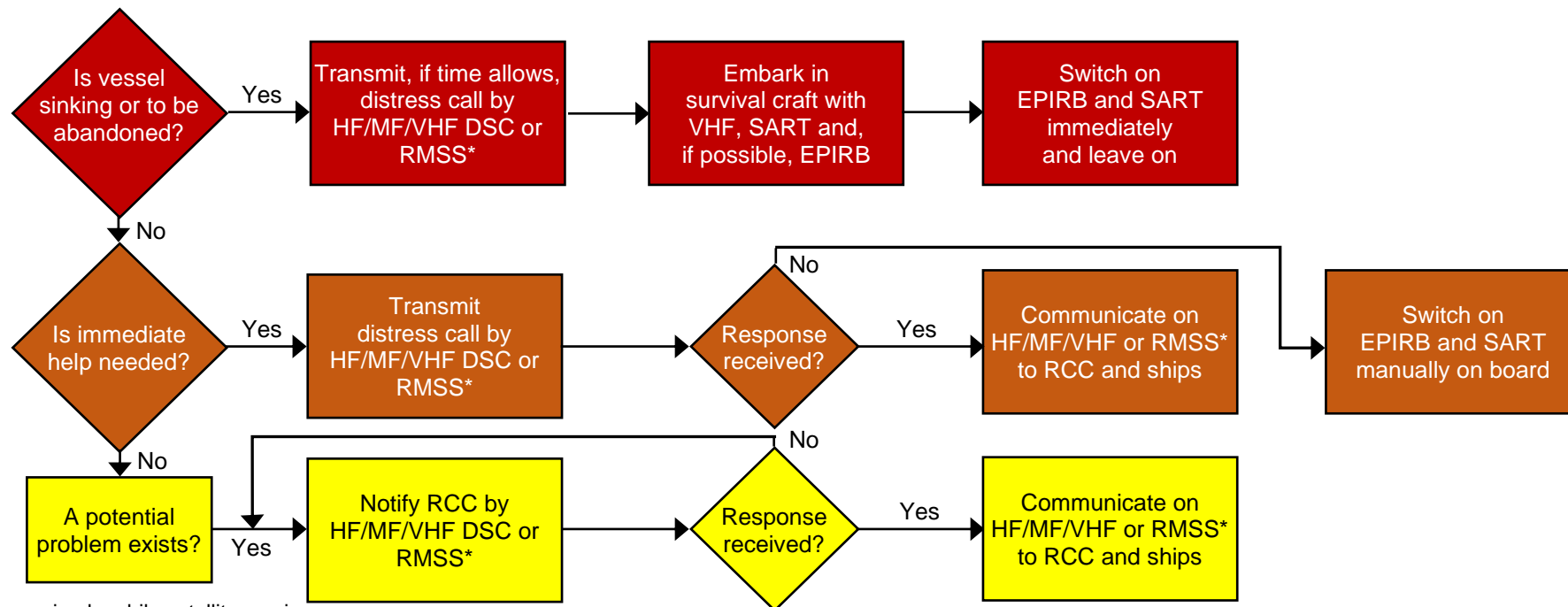


ANNEX

GMDSS OPERATING GUIDANCE FOR SHIPS IN DISTRESS SITUATIONS



* Recognized mobile satellite service

1. EPIRB should float free and activate automatically if it cannot be taken into survival craft.
2. Where necessary, ships should use any appropriate means to alert other ships.
3. Nothing above is intended to preclude the use of any and all available means of distress alerting, including those listed in COLREG 72, annex IV.

Frequencies for Distress Communications		
	Digital selective calling (DSC)	Radiotelephone
VHF	Channel 70	Channel 16
MF	2 187.5 kHz	2 182 kHz
HF4	4 207.5 kHz	4 125 kHz
HF6	6 312.0 kHz	6 215 kHz
HF8	8 414.5 kHz	8 291 kHz
HF12	12 577.0 kHz	12 290 kHz
HF16	16 804.5 kHz	16 420 kHz