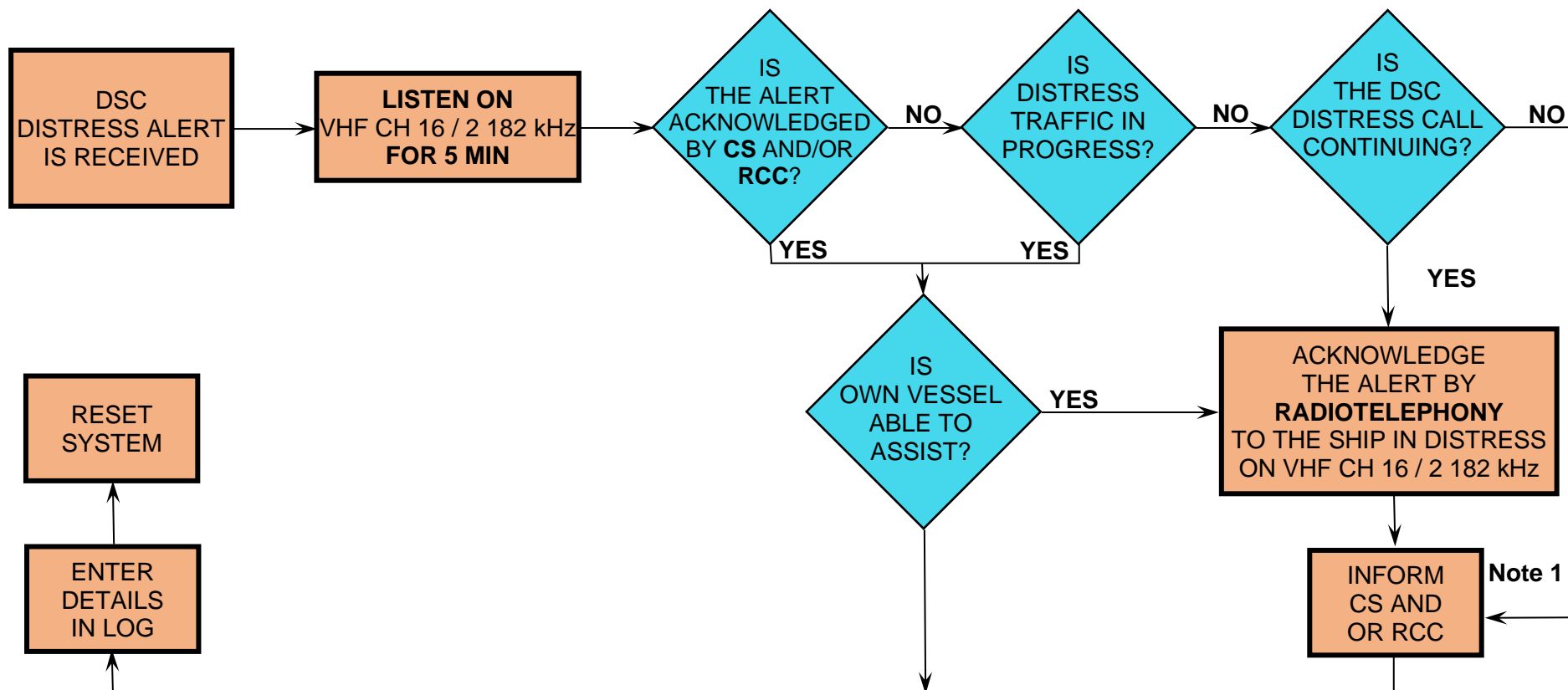


FLOW DIAGRAM 1

ACTIONS BY SHIPS UPON RECEPTION OF A **VHF / MF DSC** DISTRESS ALERT



REMARKS:

Note 1: Appropriate or relevant RCC and/or coastal station should be informed accordingly. If further DSC distress alerts are received from the same source and the ship in distress is beyond doubt in the vicinity, a DSC acknowledgement may, after consultation with an RCC or coastal station, be sent to terminate the call.

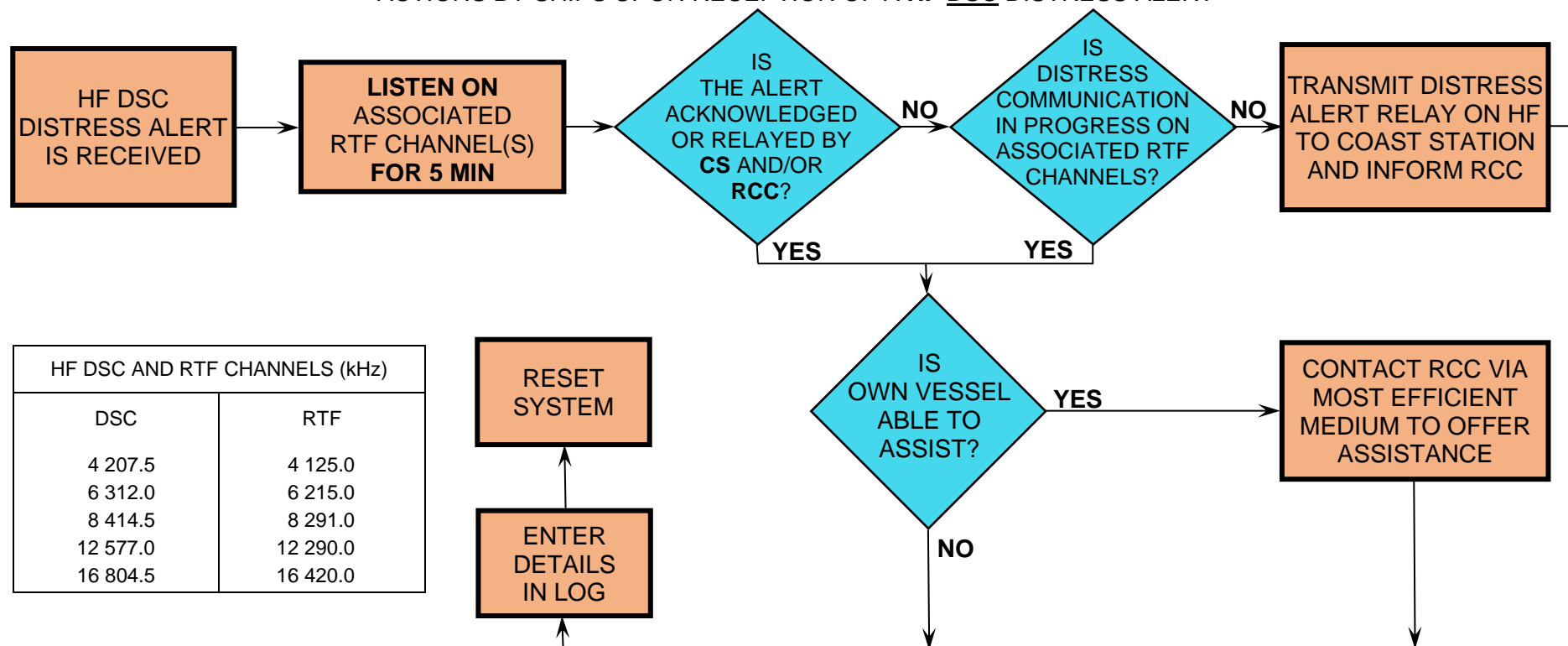
Note 2: In no case is a ship permitted to transmit a DSC distress alert relay on receipt of a DSC distress alert on either VHF channel 70 or MF channel 2 187.5 kHz.

CS = coastal station

RCC = rescue coordination centre

FLOW DIAGRAM 2

ACTIONS BY SHIPS UPON RECEPTION OF A HF DSC DISTRESS ALERT



REMARKS:

NOTE 1: If it is clear the ship or persons in distress are not in the vicinity and/or other crafts are better placed to assist, superfluous communications which could interfere with search and rescue activities are to be avoided. Details should be recorded in the appropriate logbook.

NOTE 2: The ship should establish communications with the station controlling the distress as directed and render such assistance as required and appropriate.

NOTE 3: Distress alert relays should be initiated manually.

CS = coastal station

RCC = rescue coordination centre